

Call for Papers

Authors are invited to submit contributions to any of the conference topics listed in the call for papers. Registration and submission of extended abstracts should be made through the conference web page.

Registration does not oblige authors to pay any fee until the contribution is accepted. Papers can only be accepted on the understanding that they will be presented at the workshop.

Registration Fees

Early bird registration until 30 April 2021:
JPY 50,000.00 and JPY 20,000.00 for students.

Standard registration after 30 April 2021:
JPY 60,000.00 and JPY 25,000.00 for students.

For presenters:

The inclusion of accepted extended abstracts in the conference proceedings requires that the payment of the registration fee is received not later than 30 April 2021.

Note:

Only one extended abstract is permitted per registration fee. If you would like to submit more than one extended abstract, there is an additional fee of JPY 50,000.00 for each abstract.

Registration fee includes:

Conference documentation of extended abstracts, ticket for conference dinner, coffee breaks and lunches.

Accompanying persons (non-scientists):

JPY 20,000.00 including ticket for conference dinner, coffee breaks and lunches.

Important Dates (New dates)

Open of online submission of extended abstract. **1 November 2020**

Deadline of extended abstract submission. **31 January 2021**

Notification of acceptance of abstract. 15 March 2021

Open of registration. 15 March 2021

Publication of final program. 30 April 2021

Deadline of early registration. 30 April 2021

Online publication of extended abstracts. 10 June 2021

Scientific Secretary

Prof. Masato Komuro
Muroran Institute of Technology
27-1 Mizumoto, Muroran, Japan 050-8585

Administrative Secretary

E. C. PRO Inc.
N7 W4, Kita-ku, Sapporo, Japan 060-0807
Tel. +81-11-299-5910 / Fax +81-11-299-5911
E-mail: rocexs2020@ec-pro.co.jp

Conference Venue

The conference will take place at the conference hall of the Hokkaido University (HU)

Address:

N8 W5, Kita-ku,
Sapporo, 060-0808 Japan

Supporting Organizations



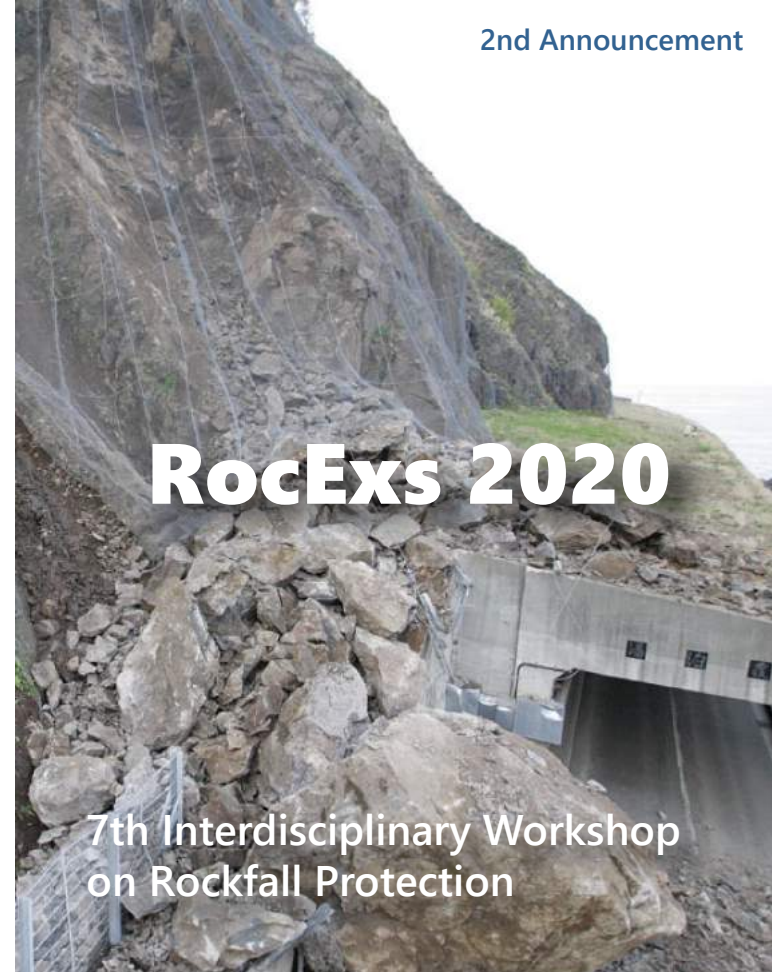
北海道大学
大学院工学研究院 / 大学院工学院 / 工学部
Faculty, Graduate School and School of
ENGINEERING
Hokkaido University



MURORAN INSTITUTE OF TECHNOLOGY

Supporting Organizations

- Japan Society of Civil Engineers
- Japanese Geotechnical Society
- International Association for Bridge & Struct. Engineering
- The Japan Landslide Society
- Japan Society of Engineering Geology
- The Mining and Materials Processing Institute of Japan
- Hokkaido University
- Muroran Institute of Technology



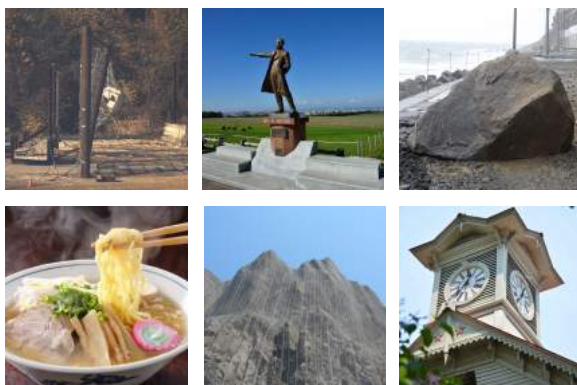
~~Sapporo~~ **New dates** **Sapporo**
15-18 June 2020 **21-24 June 2021**



Aims

Rockfalls hazards are frequent and damaging in mountainous regions and along coastal cliffs. They are also frequent in cut slopes of the transportation corridors, in quarries and other excavations. Significant progress has been achieved in the last decades, particularly in rock mass characterization of potential rockfall sources, in detecting premonitory instability features and monitoring of displacements, in the rockfall modeling and in the design of both protective and stabilization measures. The analysis and management of the rockfall hazards and risks often requires a multidisciplinary approach. The aim of the workshop is to bring together earth scientists, engineers, practitioners, decision makers and end-users, in order to discuss and evaluate new methods, models and approaches for the analysis and management of the rockfalls that have been recently developed.

Previous workshops were held in Japan (Kanazawa 1999), France (Vaujany 2005, organized by Irstea), Switzerland (Morschach 2008, organized by WSL, ETHZ und EPFL), Austria (Innsbruck-Igls 2011, organized by the Geological Service of the Austrian Torrent and Avalanche Control), Italy (Lecco 2014, organized by the Politecnico di Milano, Università degli Studi di Milano-Bicocca and Ordine degli Ingegneri della Provincia di Lecco) and Spain (Barcelona 2017, organized by the Rockfall Expert Network, the Universitat Politècnica de Catalunya and the Institut Cartogràfic i Geològic de Catalunya).



Chairperson

Norimitsu Kishi
Muroran Institute of Technology, Japan

Co-chairperson

Masuhiko Beppu
National Defense Academy, Japan

Yoshiaki Fujii
Hokkaido University, Japan

Hiroshi Masuya
Kanazawa University, Japan

Organizing Committee

Kazunori Fujikake, National Defense Academy, Japan
Takahiro Igarashi, Koken Engineering Co. Ltd., Japan
Hiroshi Kano, Hokkaido Road Management Engrg. Center, Japan
Minoru Kawakita, Docon Co. Ltd., Japan
Takumi Kawamura, Iwata Chizaki Inc., Japan
Ryoji Kawase, Koken Engineering Co. Ltd., Japan
Junichi Kodama, Hokkaido University, Japan
Nariaki Kodama, National Inst. of Tech., Hakodate College, Japan
Masato Komuro, Muroran Institute of Technology, Japan
Hisashi Konno, CERi, PWRI, Japan
Satoshi Kumakura, Docon Co. Ltd., Japan
Osamu Matsuo, Tokyo Consultants Co. Ltd., Japan
Takashi Mikami, Hokkaido University, Japan
Hiroaki Nishi, CERi, PWRI, Japan
Hiroaki Oura, HRS Co. Ltd., Japan
Yoshimi Sonoda, Kyushu University, Japan
Keiichi Tamura, Hokkaido Regional Development Bureau, Japan
Shintaro Yasunaka, CERi, PWRI, Japan

International Advisory Committee (Provisional)

Frédéric Berger, France	Stéphan Lambert, France
Frank Bourrier, France	Rosa María Mateos, Spain
Olivier Buzzi, Australia	Olga C. Mavroul, Netherlands
Francesco Calvetti, Italy	Sandra Melzner, Austria
Jordi Corominas, Spain	Michael Mölk, Austria
Giovanni B. Crosta, Italy	José Moya, Spain
Michael Dietze, Germany	Daniele Peila, Italy
Luuk Dorren, Switzerland	Alexander Preh, Austria
John Duffy, USA	Kristian Schellenberg, Switzerland
Erik Eberhardt, Canada	Greg M. Stock, USA
Anna Giacomini, Australia	Joan M. Vilaplana, Spain
Laura Govoni, Italy	Thomas Vogel, Switzerland
Michel Jaboyedoff, Switzerland	Axel Volkwein, Switzerland
Marc Janeras, Spain	Duncan Wyllie, Canada
Michael Krautblatter, Germany	

Suggested Topics

- Rockfall source identification and characterization
- Rockfall inventory and/or mapping
- Rockfall runout dynamics and impact mechanics
- New and emerging technologies in rockfall
- Hazard and risk analyses
- Rockfall modeling
- Monitoring and alert systems
- Mitigation and protective measures
- Large rockfalls and rock avalanches
- Case histories

Programme (Tentative)

Pre-Conference (21 June, Mon)

16:00-18:00 Early registration

Day 1 (22 June, Tue)

08:30-09:00 Registration continues

09:00-09:30 Opening

09:30-10:00 Keynote presentations

10:45-18:00 Technical presentations

19:00-21:00 Conference dinner

Day 2 (23 June, Wed)

09:00-17:00 Keynote & technical presentations

17:00-17:30 Closing address

Field Trip (24 June, Thu)

08:00-17:00 Shakotan Peninsula & Cape Kamui,
Hokkaido, Japan

The extended abstracts received and accepted will be presented in either oral or poster format. The decision will be communicated to the presenting authors in April 2021.

Updated information on the Symposium will be available in the following URL:

<http://www.ec-pro.co.jp/rocexs2020>